



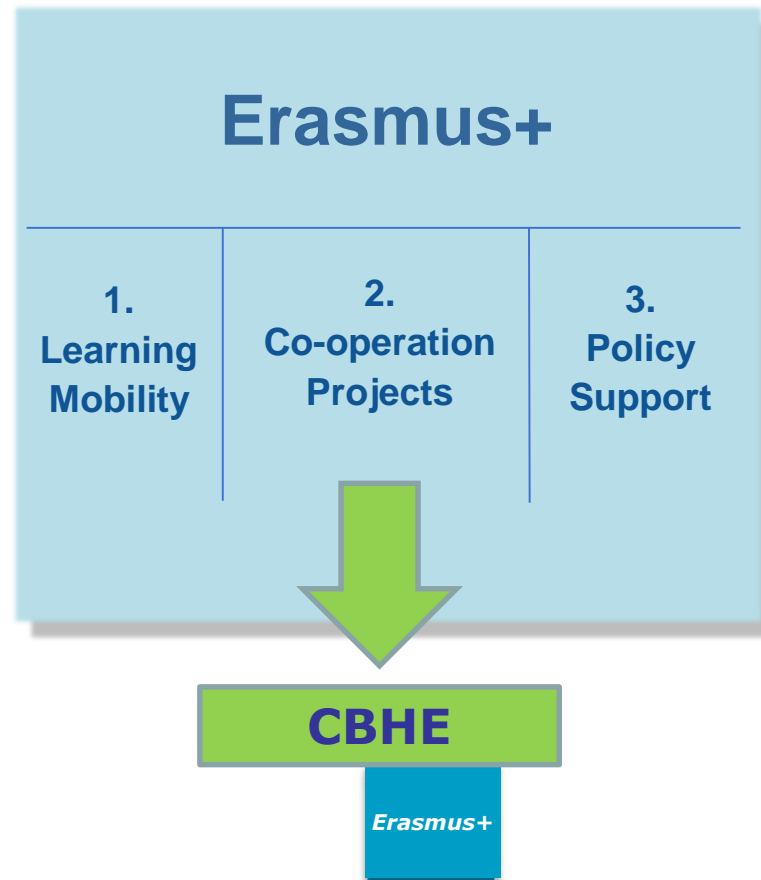
Erasmus+

Capacity Building for Higher Education



Where to find CBHE in Erasmus+

A single integrated programme



Specific activities:

- **Jean Monnet**
- **Sport**

Definition

Capacity-Building Projects are transnational cooperation projects based on **multilateral partnerships** primarily between **higher education institutions (HEIs)** from Programme and eligible Partner Countries

Programme and Partner Countries

Programme Countries (33 countries paying a contribution to E+)

EU Member States:

Austria, Belgium, Bulgaria, Croatia, Cyprus, Czech Republic, Denmark, Estonia, Finland, France, Germany, Greece, Hungary, Ireland, Italy, Latvia, Lithuania, Luxembourg, Malta, Netherlands, Poland, Portugal, Romania, Slovakia, Slovenia, Spain, Sweden, United Kingdom

Other programme countries:

Iceland, Liechtenstein, Norway, former Yugoslav Republic of Macedonia, Turkey.

CBHE Eligible Partner Countries (> 150 countries)

- Region 1: Western Balkans
- Region 2: Eastern Partnership
- Region 3: South-Mediterranean
- Region 4: Russian Federation
- Region 6: Asia
- Region 7: Central Asia
- Region 8: Latin America
- Region 9: Iran, Iraq, Yemen
- Region 10: South Africa
- Region 11: African, Caribbean and Pacific

Ineligible Partner countries:

Regions 5, 12 and 13

Objectives

Build capacity and help modernise higher education institutions in Partner Countries, to ensure a structural, long-lasting impact

- Support modernisation & internationalisation
- Improve quality
- Improve the level of competences and skills
- Enhance management, governance in HEIs
- Promote people-to-people contacts, intercultural understanding
- Voluntary convergence with EU HE policy developments

Types of projects

- 1. Joint Projects:** New curricula, joint degrees, learning and teaching methodologies, staff development, quality assurance, governance, Bologna tools
- 2. Structural Projects:** Reforms at national level with the support of the authorities in the Partner Countries (policy modernisation, Bologna policies, governance and management of higher education systems...)

CBHE: how does it work ?

- Projects of 2 or 3 years
- Projects run by consortium of institutions
- Consortium must include Programme Countries and Partner Countries
- Project can be coordinated by an institution from a Programme or a Partner Country

Consortia Structure

National Projects

(**1** Partner Country only +
min. 2 Programme Countries)

**STRUCTURAL
PROJECTS:**
Partner
Country
Ministries
for HE must
participate

Multi-Country Projects

(**≥ 2** Partner Countries +
min. 2 Programme Countries)

Min.1 HEI from each
Programme Country

Min.1 HEI from each
Programme Country

Min.3 HEI from the
Partner Country

Min.2 HEI from **each**
Partner Country

At least as many
Partner Country HEIs as
Programme Country
HEIs

At least as many
Partner Country HEIs as
Programme Country HEIs

Exceptions

Priorities and project types

National Projects

Defined by the **Ministries of Education** in close consultation with the EU Delegations

Must address

National priorities set for Partner Country in Regions 1, 2, 3, 7, 10

Regional priorities for the regions where no national priorities are established: Regions 6, 8, 9, 11

Multi-Country Projects

Defined by the **Commission** and based on EU's external policy priorities

Must address

the **regional priorities** for countries in the same region (regional projects)

or

regional / national priority common to different regions (cross-regional projects)

CBHE project Priorities

Types of Activities Categories of Priorities	Curriculum Development	Governance and Management	Higher Education and Society
1. Subject Areas	X		
2. Improving Management and operation of HEIs		X	
3. Developing the HE sector within society at large			X

Only 1 choice per type of project is possible

Budget and duration



Budget categories

Staff costs (max 40%)	4 Staff Categories (Manager, Researcher/ Teacher/Trainer, Technician, Administrator)
Travel costs	Students/staff from partners in countries involved in the project from their place of origin to the venue of the activity and return.
Costs of stay	Subsistence, accommodation, local and public transport, personal or optional health insurance.
Equipment (max 30%)	Purchased <u>exclusively</u> for the benefit of HEIs in the Partner Countries
Sub-contracting (max 10%)	Exceptional for services related to competences that can't be found in the consortia



Budget allocation and justification

5 Budget Categories

Staff - UC

Travel - UC

Cost of Stay - UC

Equipment - RC

Sub-contracting - RC

2 Allocation / Justification Methods

Real Costs (RC)

Unit Costs (UC)

Other types of costs

(ex.: indirect costs etc.) are not considered for the calculation of the grant.

>>> Expected to be **covered by co-funding.**

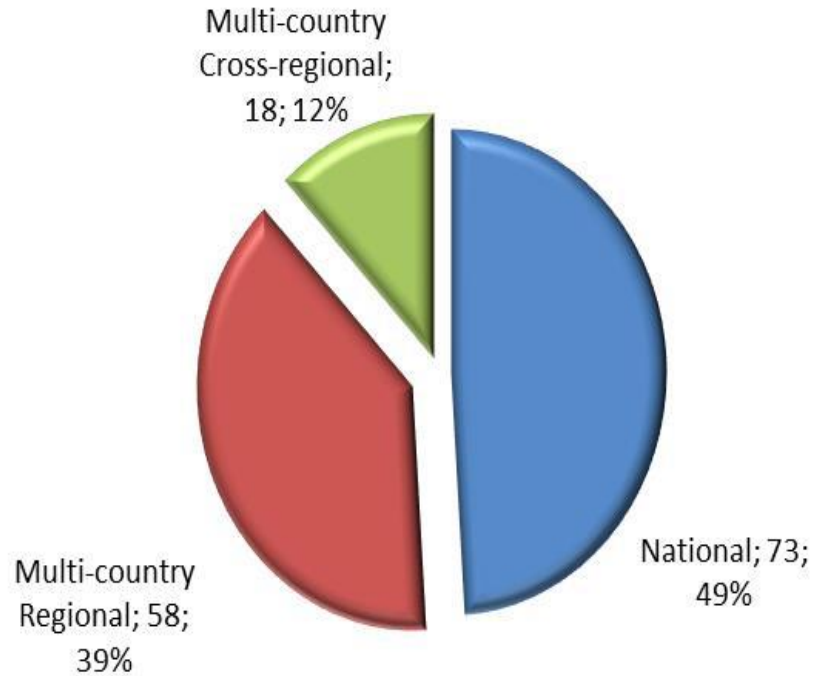
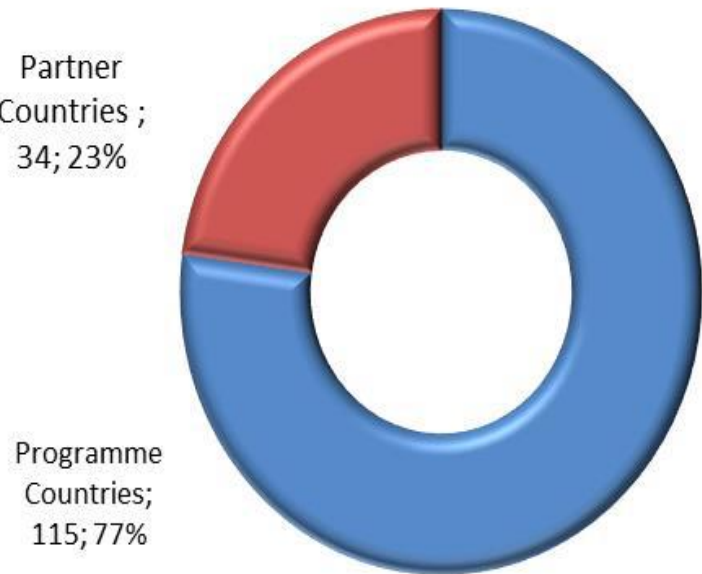


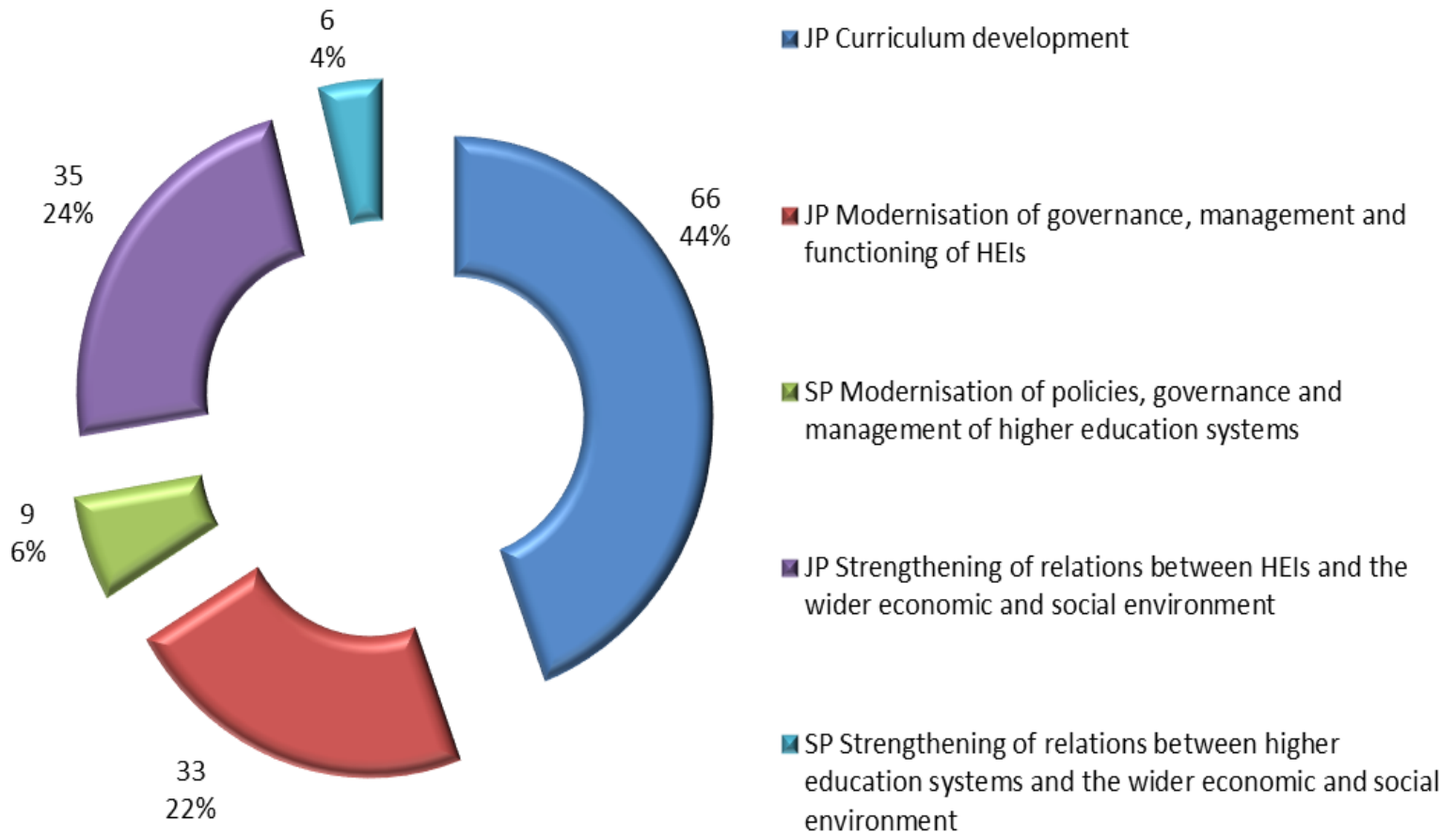
Stage	1 Western Balkans	2 Eastern Partn	3 South Med	4 Russian Federation	6 Asia	7 Central Asia	8 Latin America	9 Iran, Iraq, Yemen	10 South Africa	11 ACP	Total*
Reception	135	243	196	108	120	121	98	12	12	50	833
Eligible >60 points	102	167	151	68	76	84	80	6	8	36	609
Sent to Consultation	36	58	74	34	76	37	30	5	8	23	295
Proposed for funding	16	17	37	11	45	14	15	3	4	7	149

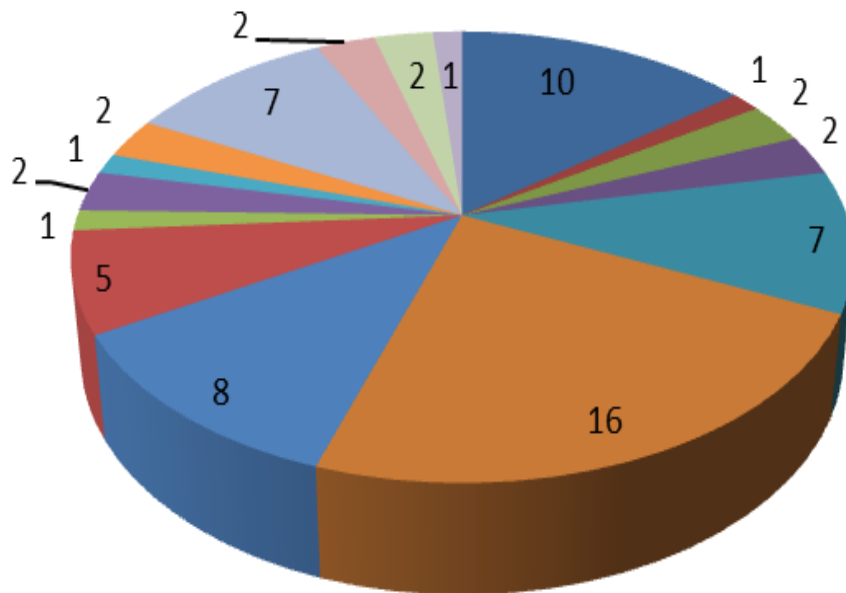
Success rate in 2017	12%	7%	19%	10%	37,5%	19%	15%	25%	33%	14 %	18 %
----------------------	-----	----	-----	-----	-------	-----	-----	-----	-----	------	------

Success rate in 2016	16,5%	10%	21%	20,5 %	68%	19%	18%	50%	36%	17 %	20 %
----------------------	-------	-----	-----	--------	-----	-----	-----	-----	-----	------	------

* Figures cannot be added as cross-regional applications are counted in one or two regions



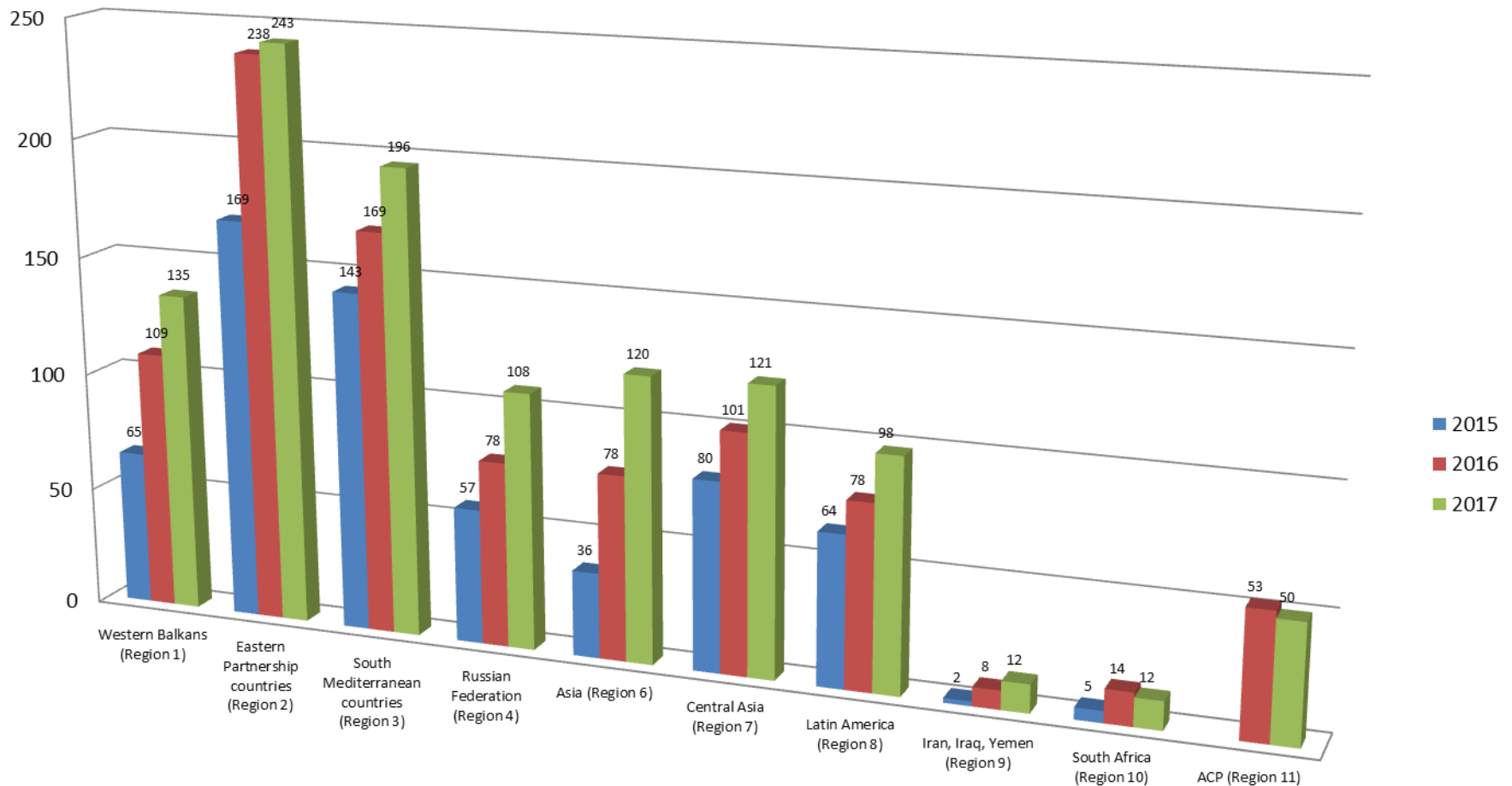




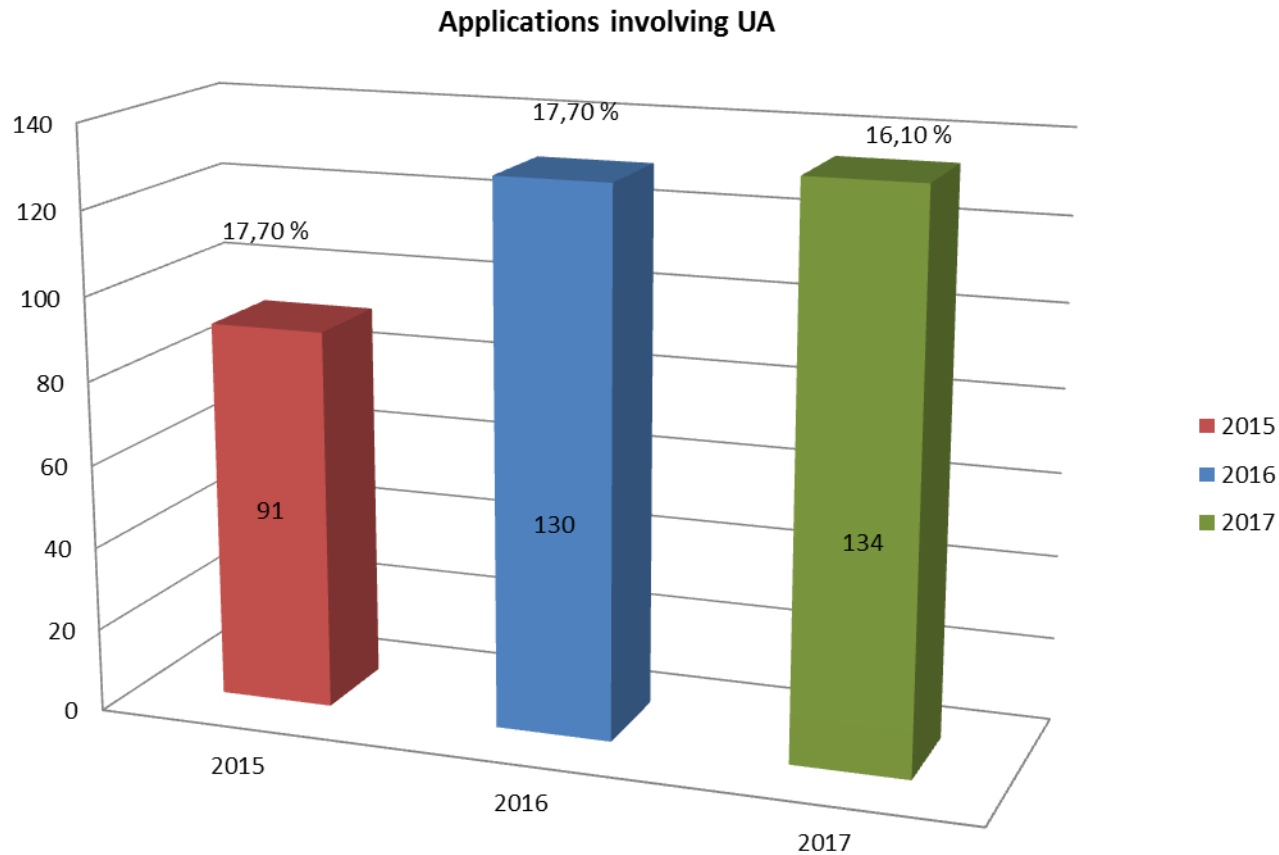
- Agriculture, forestry, fisheries and veterinary
- Biological and related sciences
- Education
- Environmental sciences
- Humanities (except languages)

- Architecture and construction
- Business and administration
- Engineering and engineering trades
- Health
- Information and Communication Technologies (ICTs)

Evolution of applications (2015-2017)

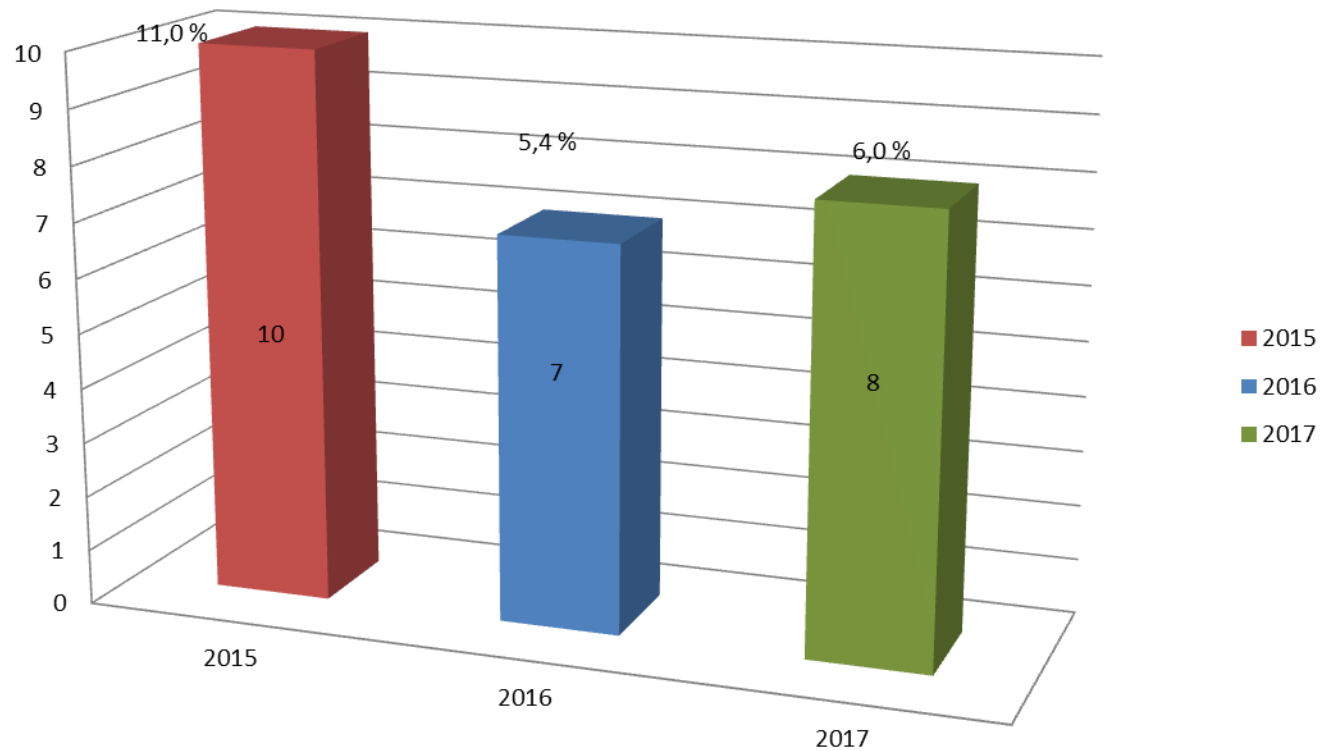


Evolution of UA participation



Evolution of selected projects

Selected projects involving UA



Indicative budget for 2018

Region	Budget allocated 2016 (in Mio €)	Budget allocated 2017 (in Mio €)	Budget allocated 2018 (Indicative) (in Mio €)	Indicative number of selected projects**
REGION 1 - Western Balkans	13,17	13,82	14,57	16
REGION 2 - Eastern Partnership countries	13,86	13,51	12,88	15
REGION 3 - South-Mediterranean countries	28,57	27,84	26,55	31
<i>Additional allocation for Tunisia*</i>	0	3,00	0	0
REGION 4 - Russian Federation	6,89	6,72	6,41	7
REGION 6 - Asia	35,38	39,55	41,44	47
REGION 7 - Central Asia	9,2	8,80	8,80	10
REGION 8 - Latin America	13,1	13,20	13,20	15
REGION 9 – Middle East (Iran, Iraq, Yemen)	1,9	2,00	2,10	3
<i>Specific allocation for Iran</i>	0,69	0,69	0	0
REGION 10 - South Africa	3,42	3,91	4,20	7
REGION 11 - ACP countries	5,29	5,64	6,00	7
TOTAL	131,47	138,68	136,15	156

*An additional allocation for Tunisia might become available subject to the relevant Commission decisions being taken.

** Calculated on the average grant/project recorded in 2017.

Novelties in the CBHE 2018 call

- **No Special Mobility Strand Subject**
- **Only 3 thematic priority areas**
- **Only 2 Programme Countries needed**
- **Start of the eligibility period:**
 - **15 November 2018 or**
 - **15 January 2019**

Key messages for 2018

- Encouraging the cooperation with Asian countries
- Attention to eligibility criteria
- Diversification of projects in terms of objectives activities, target groups and consortium composition
- New national and regional priorities
- Relevance of cross-regional applications?

Indicative Roadmap for 2018 CBHE call

Steps	Dates
Publication Erasmus+ CBHE Call for Proposals	October 2017
Deadline for submission of applications	8 February 2018, 12:00 CET
Verification of eligibility of project proposals	February – March 2018
Assessment of projects by experts (remotely)	March – May 2018
Consultation procedure	June 2018
Evaluation Committee for selection of projects	July 2018
Sending for signature of Award decision by Agency AO	July 2018
Notification of applicants & publication of results	July 2018
Preparation and signature of grant agreements	August-September 2018
Start of eligibility period	15 November 2018 or 15 January 2019

What is assessed?

- **Eligibility criteria**

Formal submission requirements; Grant size and duration; Applicant, Partner and Partnership requirements (number of partners, status of the grant applicant & partners, etc)

- **Exclusion & selection criteria**

Bankruptcy, fraud, Legal status of applicant (ex: natural persons cannot apply), Financial capacity (private companies only)

- **Award criteria**

Relevance, Quality and design + implementation, Quality of the team + cooperation, Impact and sustainability

Award Decision

EACEA takes decision based on:

Evaluation Committee's recommendation
taking into account:

ranking list on quality established by external experts

the results from the consultation process

the budget available for each region

the need to achieve a geographical balance within a region

sufficient coverage of the priorities



CBHE Information sources

Erasmus+ website - EACEA

http://eacea.ec.europa.eu/erasmus-plus_en

Erasmus+ website – EU Commission

http://ec.europa.eu/programmes/erasmus-plus/index_en.htm

International E+ Contact Points (ICPs) in Programme Countries

https://eacea.ec.europa.eu/erasmus-plus/contacts/international-erasmus-plus-contact-points_en

National Erasmus+ Offices (NEOs) in certain Partner Countries (PCs)

https://eacea.ec.europa.eu/erasmus-plus/contacts/national-erasmus-plus-offices_en



thank you

merci
obrigado
grazie
gracias
kiitos
спасиби
tack
köszönöm
хвала
danke
aciū
hvala vam
teşekkür ederim
Dank u
tak
pakka bér
σας ευχαριστώ
ddiolch 'ch
dziękuję
dëkujj
תודה
hvala
blagodarya
Dakujem
Tapadh leibh
falemmnderit
спасибо
شكرا
mulțumesc
tānan teid
дзякуй
trugarez
Vi благодарам
謝謝
धन्यवाद
Go raibh maith agaibh
Paldies